

Course Fee
\$845 (before GST)

CHRONIC DISEASE MANAGEMENT 201

(BLENDED TRAINING)

Chronic diseases are becoming increasingly prevalent and complex in modern healthcare. Many patients present with multiple comorbidities, requiring a team-based approach that involves collaboration amongst healthcare professionals. This coordinated care helps manage patients' biological, psychological and social aspects to achieve optimal outcomes.

COURSE OBJECTIVES

This course equips healthcare professionals with the fundamental knowledge and skills needed to manage patients with chronic diseases in primary care settings.

LEARNING OUTCOMES

On completion of the course the learner will be able to:

- 1) State the clinical manifestations, medical and pharmacological management of common chronic diseases:
 - Asthma (Pediatrics), Chronic Kidney Disease (CKD), Dementia, Heart failure, Stroke and Ischemic Heart Disease, osteoporosis, Parkinson Disease
- 2) State the clinical management of depression, anxiety and insomnia.
- 3) Discuss the role of health promotion and health education in managing patients with chronic diseases.
- 4) Discuss the nursing management, concept of self -management and caregiver education for dementia and stroke

MODULE 1

Health Promotion and Health Education in Chronic Disease Management
(online module - to be completed before course)

MODULE 2

Management of Chronic Diseases, Asthma (Pediatrics), Chronic Kidney Disease (CKD), Dementia, Heart failure, Stroke and Ischemic Heart Disease, Osteoporosis, and Parkinson Disease

MODULE 3

Clinical management of mental health

- Psychoeducation - depression, anxiety, insomnia
- Sleep Hygiene

CERTIFICATION

A Certificate of Participation will be awarded if the following criteria is met:

- Complete all online modules on eLearn.
- Achieve a minimum of 80% attendance.
- Achieve 80% MCQs post course.
- Complete an online post course evaluation.

ASSESSMENT

All participants to complete a post course online MCQ. Passing mark is 80%

TARGET AUDIENCE

- Registered Nurses

MAX 12 CPE POINTS
(PENDING APPROVAL)

REGISTER
HERE

COURSE DATES

Virtual Sessions

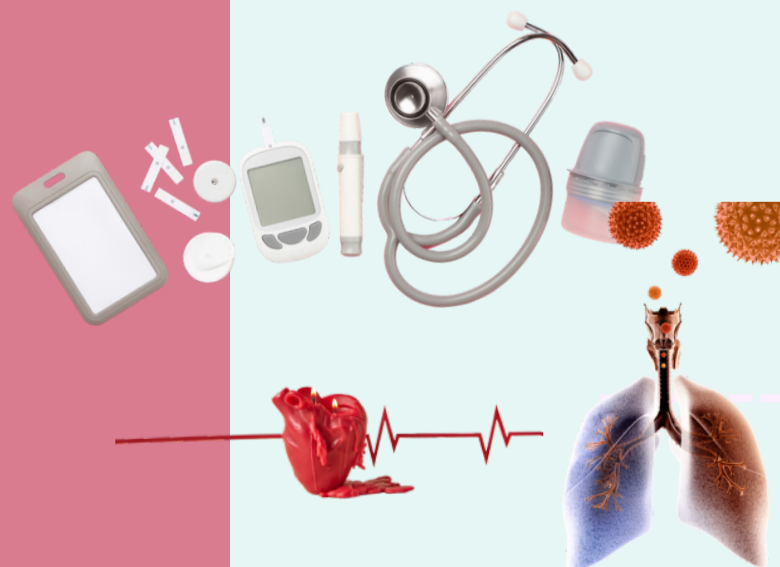
Dates: 14 Jan, 21 Jan 2027
Time: 1.30 pm to 6 pm

Classroom Session

Date: 28 Jan 2027
Time: 8.30 am to 5.30 pm
Venue: Ang Mo Kio Polyclinic

ENTRY REQUIREMENT

- Minimum a diploma level



for.sg

<https://for.sg/pcackms>